

Bookings

All groups (self-led or otherwise) must book in advance to ensure availability of the park & teaching sessions. Please book provisionally by telephone and then return the booking form to confirm your visit and programme requirements.



Please contact the Education Officer for information and bookings.

Tel. **01772 324436** on Mondays or Thursdays
Or email: **education@cuerdenvalleypark.org.uk**

We are a LEA safe site to visit. Complete form type B for Rivers/Pond Dipping and type A for all other activities.

We have an indoor contingency programme for severe weather, but we will still go out if it is just raining.

**Cuerden Valley Park Trust, Park Office,
The Barn, Berkeley Drive, Bamber Bridge
PRESTON, PR5 6BY**

education@cuerdenvalleypark.org.uk



Education Programmes for Primary Schools – 2011

We would like to invite you to join us for an inspiring visit to Cuerden Valley Park. We are offering educational activities that are linked to the National Curriculum and QCA Schemes of Work. Programmes include our very popular River Studies and Victorians as well as brand new for 2011 Owl-tastic experience and Arts in the Park!

Half Day Programmes

1. River Studies

KS2-NC and QCA Schemes Links: Science, Geography:



- Water and its effect on landscapes and people.
- The physical features of the River Lostock.
- The processes of erosion and deposition.
- Identification and classification of living things found in the River Lostock.

Using fieldwork techniques children will measure river flow, observe erosion & deposition and sample the substrate of the river using gold pans! They will also find some of the living things in the river, studying classification and adaptation.

2. Pond dipping/Woodland Minibeasts

KS1/2 NC and QCA Schemes Links:

Science, Geography:

- Adaptation and feeding relationships of living things in their environment.
- Variation and Classification of pond creatures.
- Responsible handling of living things.



Using nets and trays, children catch and identify a range of invertebrate life in a pond and woodland. We use our own ID charts. The children search these two habitats and compare their finds studying classification and adaptation.

3. Woodland Wonders

KS1/2 NC and QCA Schemes Links:

Science, Citizenship:



- Explore and develop ideas and sensitivity to the natural environment.
- There are different plants in the immediate environment.
- Treat growing plants with care.

The children are taken to the American Pinetum to explore the woodland, using their senses. This activity does not concentrate on naming or classifying wildlife, or even its scientific study. Children are part of the natural world and as such are encouraged to take care of living things and have a respect for nature.

Costs

As we are a charity there is a small charge to cover staff and administrative costs. All costs below are per child.

Orienteering (self led)	£1
Half Day (1 activity)	£3
Half day Owl-tastic experience	£4
Full Day (1 activity + Orienteering)	£4
Full Day (2 activities)	£5.50
Full Day (1 activity + Owl-tastic)	£6
Full Day Victorians	£6

All programs (excluding Victorians) are available on Mondays and Thursdays subject to availability.

Full day Victorian programs will be running daily on the following dates.

4th to 8th April
27th June to 1st July, 4th July to 8th July
26th to 30th September 2011.

There is no charge for teachers or adult helpers.

Safety

Every aspect of the visit has been reviewed and the risks reduced to a minimum to ensure that you are safe while you enjoy our stimulating learning experiences. If at any time we feel that the health and safety of the children are being put at risk for any reason, we reserve the right to alter or cancel one or more activities. For example, in severe weather we may run our indoor contingency programme. Please be aware we still go outdoors in the rain. Risk assessments will be made available before the visit and you are encouraged to attend a site pre-visit.



The Education Officer and Rangers of Cuerden Valley Park Trust will run your programme but you and adult supervisors remain responsible for discipline and should ensure that pupils are adequately supervised at all times. In particular, please make sure you supervise your children at lunchtimes.

Recycling



We encourage children from your school to recycle lunch packaging. We have relevant bins on the premises for your use. We can also provide an Eco-Lunch activity to highlight the importance of recycling. Please let us know when you book if this is something you require.

4. Orienteering

KS2 NC and QCA Schemes Links:
Geography, PE and Citizenship:



- Development of orienteering and problem-solving skills.
- Building trust and working as a team.
- Following maps and trails, solving physical problems and challenges.

Discover the delights of the Park by following the easy-to-use orienteering trail. The children work in small groups using a map and clue sheet and have to find their way around the park. This activity can be easily supervised by school staff.

5. Discovering Habitats

KS2 NC and QCA Schemes Links: Science, Geography

- To identify different types of habitat.
- Observe the conditions in a local habitat and make a record of the animals found.
- Use keys to identify local plants or animals.



If you are looking for a programme that doesn't include water, this is a perfect fun filled activity. The children examine two different communities (grassland and woodland) and have to identify the names of plants and animals, what jobs they do and where they live.

New for 2011!

6. Cuerden Creature Creation!

KS1/2 NC and QCA Schemes Links: Art and design, Science, English

- Pupils will develop sensitivity to the natural environment and its variations.
- Use storytelling and group discussion to encourage independent thought and creativity.
- Create a piece of ephemeral artwork using natural materials and processes.
- Take a fun look at the adaptations of living things to the environment.

Pupils will be taken on a magical adventure to explore the mythical land of the Querdosaurus, a mysterious beast who lives in Cuerden Valley Park. Pupils begin their adventure by exploring the park with an artist's eye to discover the patterns, colours and shapes hidden in their natural surroundings. They then gather close to hear the story of the Querdosaurus. Taking inspiration from the story and what they have learnt, pupils will create pieces of ephemeral art and sculpture using the materials found in the park around them.



The emphasis in this program is on creating work “lasting only one day” before returning to nature. Pupils are encouraged to evaluate and appreciate the work created by others.

GENERAL INFORMATION

Cuerden Valley Park



We begin indoors at The Barn- the headquarters for both Cuerden Valley Park Trust and the Wildlife Trust for Manchester, Lancashire and North Merseyside. The outdoor learning environment is managed by Cuerden Valley Park Trust (an independent charity) and

consists of a lake, areas of broad-leaved woods, pine forest, meadows, ponds, remains of Old Kem Mill (a ruined bleach and dye works) and the River Lostock. The River Lostock is a textbook example of a lowland river with pools, riffles, meanders and oxbow lakes. With this array of different habitats you may see wildlife such as the Kingfisher by the river or the common spotted orchid in the meadow.

What to Bring



Children should be appropriately dressed for an outdoors visit with suitable clothing and footwear, especially for wet weather. Paths may be wet and

muddy. We also advise that you provide hats, long-sleeved tops and sunscreen in sunny weather. Children do go in the water for River Studies, so we do recommend wellies or an extra pair of shoes/socks. For the authenticity and enjoyment of the Victorians programme, we would strongly urge you to dress up in Victorian costume; details will be provided on booking.

New for 2011!

Eco-Schools scheme

The activities and programs offered by Cuerden Valley Park already fit in well with the Eco-Schools scheme. We can help you to build up the skills and knowledge base needed within your school in order to help you move through the Eco-Schools framework.

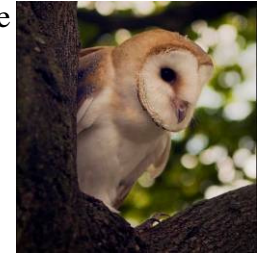
- **Environmental review.** The pond dipping/minibeasts and discovering habitats programs provide pupils with the basic skills needed to be able to return to school and carry out their own environmental audit.
- **Action Plan.** We can provide lots of handy tips and strategies to help your school progress through the Eco-Schools awards. Using hands on activities your pupils and staff will gain valuable insights into making your school more environmentally friendly, from creating bug hotels to increasing biodiversity, we can help!
- **Continuous monitoring.** Pupils taking part in the environmental programs here at the park have first hand experience of monitoring wildlife. This experience can be turned into a monitoring program that can then be carried out back at school.
- **Eco-lunches scheme.** The Eco-Lunch scheme is an excellent way of highlighting to pupils the importance of recycling and how to minimise waste.

If your school is working towards an Eco-Schools award or if this is a scheme you are considering taking part in, the Cuerden education team can help. Let us know what your requirements are and we can tailor our programs to make sure your pupils get the best learning outcomes possible.

7. An Owl-tastic experience!

KS1/2 NC and QCA schemes links: Science (Sc2 Life processes and living things), Geography and Citizenship

- Hands on experience with amazing native birds of prey.
- Learn all about native habitats and the food chains that exist within them.
- Adaptation of living things.
- Why living things need protection.



We are very excited to be able to offer an amazing birds of prey workshop here at the park! Working in partnership with Cuerden Birds of Prey this new program allows pupils the chance to get up close and personal with some of Britain's top predators. Tawny and Little owls can be found wild within the park and this program gives pupils the magical experience of meeting captive bred birds in their natural environment. Pupils will have the opportunity to become "hands on" with the birds, touching and possibly even flying them!



The program uses native birds of prey as the starting point for pupils to learn all about the life processes of native creatures, their habitats and the adaptations they have that make them so well suited to their environments.



Featuring owls and other raptors from Cuerden Birds of Prey the program promises to be a truly unforgettable learning experience!

www.cuerdenbirdsofprey.com

Victorian Outdoor Experience

It is the year 1881 and school children arrive at the Cuerden Estate to be met by Lady Katherine Towneley-Parker. Pupils are set to work trying out jobs in an attempt to gain employment on the estate.

Charcoal Burning

The children will be met by William Laithey, a Charcoal Burner on the Estate. They will be shown how charcoal is made and have a go at loading a kiln, stacking shanklings and cutting wood.



Kitchen Gardening

The children will be met by Alfred Leigh, Head Gardener at Cuerden Hall. In the Walled Orchard the children will help with stone picking, weeding, sweeping the paths and watering the plants.



Poaching shhh...

The children think that they will be meeting the Gamekeeper, but in fact they get pounced on by James Hawker, local poacher. James shows the children how to track for rabbits and lay net traps.



Ice Cream Making

The children meet Anny Hill, Scullery Maid of Cuerden Hall. Anny will show the children the Ice House and they will be shown how to make ice cream – Victorian style!

This is a fantastic opportunity for Pupils to dress up and play the part of a child working on a Victorian country estate.